

AGM- Board and Member Structures



Connected Strategies for Sustainable Communities

KLP History

- KLP is a non-profit company with a brief for integrated local development.
- Formed in 2008 from 3 previous non-profit local development companies as a result of the 'Cohesion Process' initiated by the Government.
- Covering two main development sectors- Rural Development (LEADER) & Social Inclusion.
- KLP's structure (like other companies) was mandated by government funding to a 24-person Board of Directors- who also were the only company members.
- That all changed in 2015....!



KLP Changes

- In mid 2015, the government removed its restrictions tied to funding on the company structures.
- The Board of KLP then decided on two changes:
 1. A reduction over 2 years from 24 to 15 Directors.
 2. A removal of the 24 Member rule and an opening out of membership to an unlimited number of community, small business and individual members.
- Following a Membership Invitation process- KLP had over 250 applications.
- Currently 240 registered members of which the bulk- 'Community' and 'Small Business' can vote at General meetings on elections of directors, etc.
 - 141 Community Groups
 - 48 Businesses
 - 39 Individuals

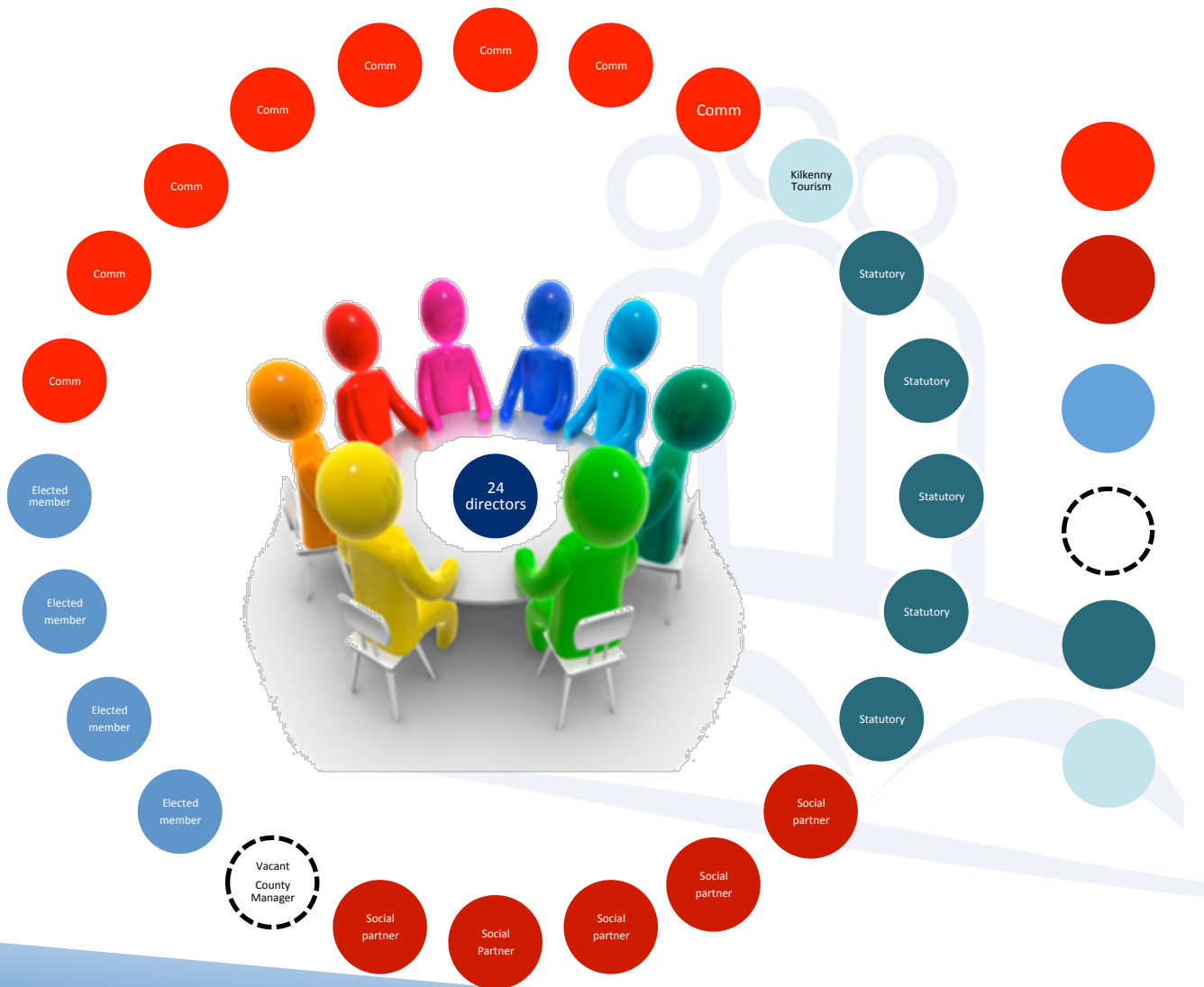


What does being a *Member* mean?

- The Members collectively own the company.
- Members directly elect some of their number as Directors to the Company Board.
- Some Members will be invited to sit on KLP policy and other subgroups groups.
- Members will be afforded opportunities to learn of and contribute towards the wider local development agenda: *tourism, rural transport, social inclusion, broadband, etc.*



2015 Board Structure



24 Directors

8 X Community & Voluntary

5 X Social Partners

4 X Elected Members

1 X County Manager nominee

5 X Statutory

1 X Kilkenny Tourism (formerly CEB)



Who are the current 18 Directors?



Suzanne Campion



Denis Drennan Chair-



Joan Fitzpatrick



Martin Costello



Paul Corcoran



Denis Hynes



Ger Mullally



Martha Bolger



Ann Gibbons



Cllr. Malcom Noonan



Cllr. John Brennan



Cllr. Eamon Aylward



John Burke



Pat McAuley



Richie O'Brien



John Connolly



Kevin Murphy



Shirley Power



Fr. Nicholas Flavin



Breda McDonald



Mick Power



Kevin Mahon

Note: Two vacancies on the current board: 1 x County Councillor & 1 x County CEO nominee



New 15 person Board from 2017

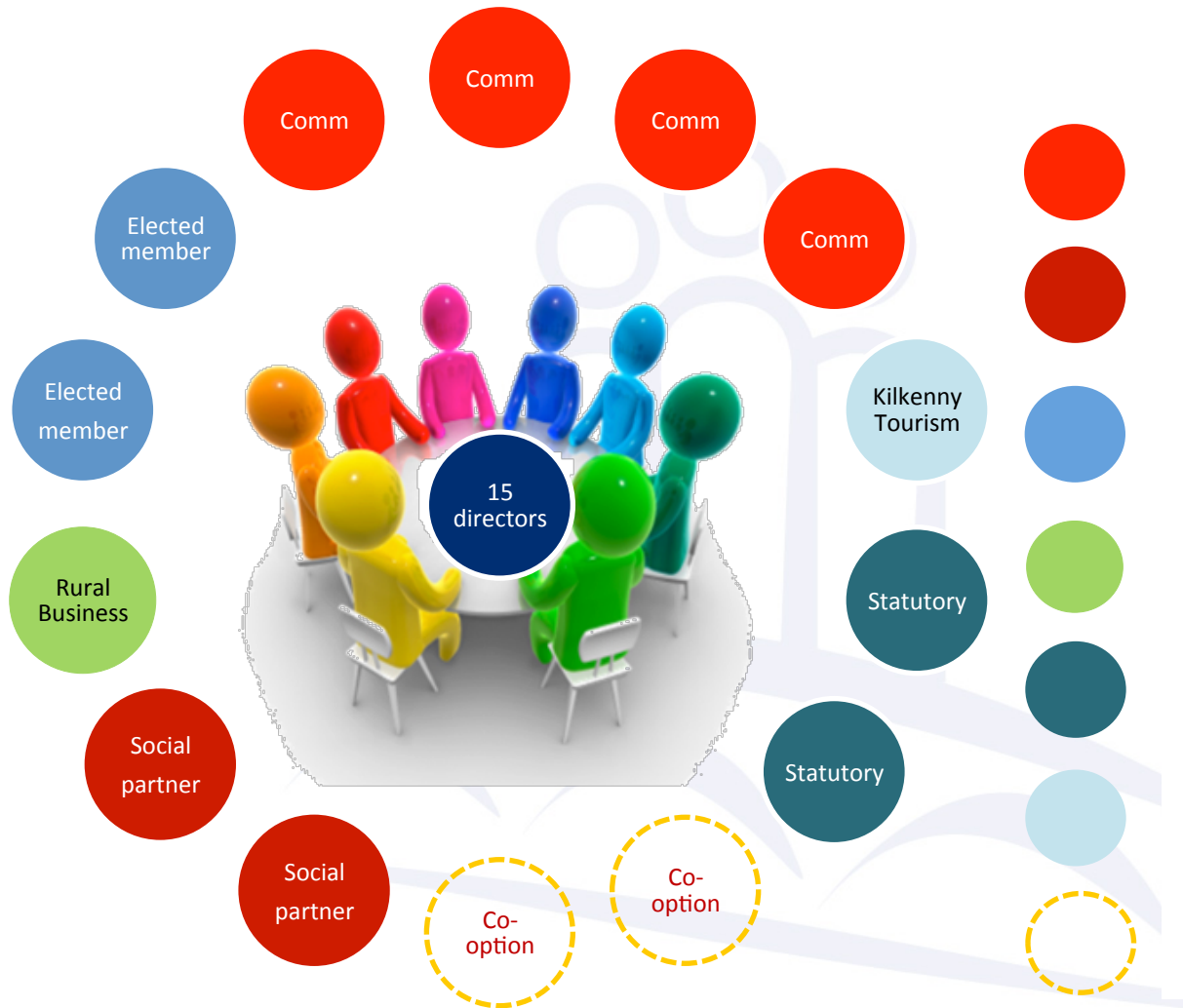
- 4 X directors will be directly elected from KLP *Community & Voluntary* group members as a whole (i.e. community groups, business members are entitled to vote; individual members are not entitled to vote; community groups and individual members are entitled to stand for election).
- 1 X director will be directly elected from among the KLP *Small Business* members by that cohort and the *Community Group* members of the *Community Advisory Council* as a whole (i.e. not only by other *Small Business* members).
- 2 X *Social Partner* co-opted directors.
- 2 X *Local Authority Elected* members.
- 2 X *Statutory Agency* co-options.
- 2 X local business directors from Kilkenny Tourism and the Chamber of Commerce.
- 2 X non-specific Board co-opted directors.

Board must have clear 50% of wider 'community' directors. Gender and other representation quotas also an issue for consideration.

- **Changes to be implemented at 2017 AGM (June-July)**



New 2017 Board Structure



15 Directors

4 X Community & Voluntary

2 X Social Partners

2 X Elected Members

1 X Rural Business Rep

2 X Statutory

1 X Kilkenny Tourism

1 X Chamber of Commerce

2 X co-option



KLP 2016 AGM & 2017 AGMs

- **2016 AGM**

- Board proposes that all current directors be re-nominated to their positions. No director election for this AGM.
- Members will be asked to approve the Annual Financial Statements (accounts).

- *A Chairperson to be elected by the Board members for a one year term at next Board meeting in July.*

- **2017 AGM**

- At least 5 (4 x community and 1 x small business) directorships for election to the Board by the Members.

